

# Southern NZ

# SANDY & MUDDY SHORE GUIDE



*A handy guide to the common animals and plants living on the sandy and muddy seashores of southern New Zealand.*

## SHOW RESPECT FOR SEASHORE CREATURES



- ☆ Tread carefully.
- ☆ Leave creatures where you found them.
- ☆ Leave attached seaweed in place.
- ☆ Handle creatures with care - close to the ground with wet hands.
- ☆ Carefully put sediment and rocks back to the same location you found them.
- ☆ Limit your collection of empty shells as other creatures may use them as homes.

## AVOID DISTURBING WILDLIFE



- 🌀 Keep your distance from seabirds including penguins.
- 🌀 Keep your distance from seals and sea lions.
- 🌀 Use the zoom on your camera or binoculars for close viewing.
- 🌀 If sea lions approach you - back away slowly.
- 🌀 Keep dogs under control.
- 🌀 Pick up any rubbish found.

## BE CAREFUL AND KEEP SAFE



- 🌊 Check tide times to avoid being cut off by rising tide.
- 🌊 Do not explore the seashore alone.
- 🌊 Watch for changing weather.
- 🌊 Look out for waves - never turn your back to the ocean.
- 🌊 Soft mud can be dangerous. If you start to sink turn back.
- 🌊 Check signs for any local hazards.

The NZ Marine Studies Centre (Dunedin) provides expert knowledge research opportunities educational programmes and resources for schools about New Zealand's marine environment.

### Acknowledgements

The Sandy and Muddy Shore Guide, produced by the NZ Marine Studies Centre, Department of Marine Science, University of Otago, is proudly supported and funded by Mobil Oil New Zealand Limited.

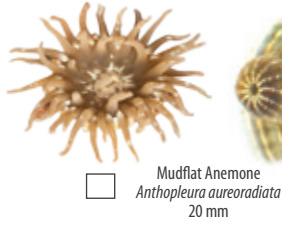
Photographer D. Pagé. Illustrator Graeme Furness. Additional photos R. Taylor, C. Brett, P. Batson, R. Morris, T. Bird and M. Francis.

© NZ Marine Studies Centre 2014. All Rights Reserved.

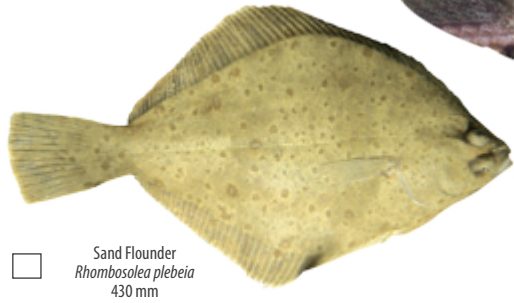
# ANEMONES

# SEA CUCUMBER

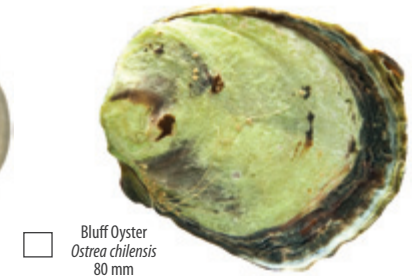
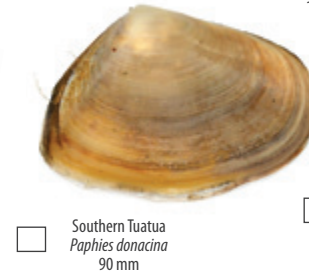
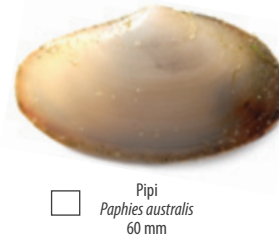
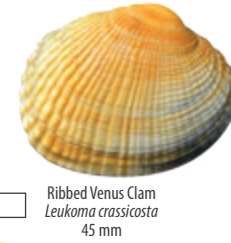
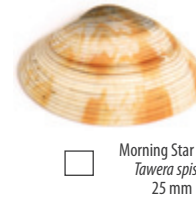
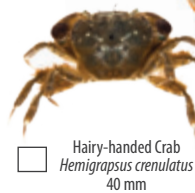
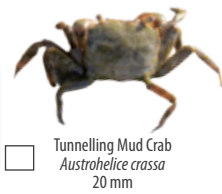
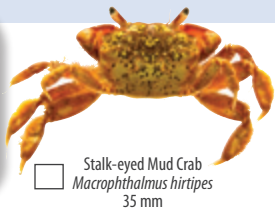
# BIVALVES



# FISH



# CRABS



# SHRIMPS & HOPPERS



Burrows

Burrowing Amphipod  
*Paracorophium excavatum*  
3 mm



Sandhopper  
*Bellocchestia quoyana*  
14 mm



Isopod  
*Scyphax ornatus*  
10 mm

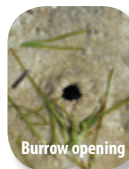


Snapping Shrimp  
*Alpheus richardsoni*  
65 mm



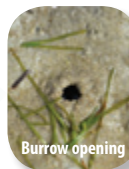
Burrow entrance and exit

Ghost Shrimp  
*Biffarius filholi*  
60 mm



Burrow opening

Mantis Shrimp  
*Heterosquilla tricarinata*  
75 mm



Male

Female

Sand Shrimp  
*Philocheras australis*  
40 mm



# SNAILS & LIMPETS



Topshell  
*Cantharidus huttonii*  
12 mm

Mud Snail  
*Amphibola crenata*  
30 mm



Horn Snail  
*Zeacumantus subcarinatus*  
15 mm



Estuarine Limpet  
*Notoacmea* sp.  
11 mm



Wheel Snail  
*Zethalia zelandica*  
22 mm



Necklace Shell  
*Tanea zelandica*  
33 mm



Mudflat Topshell  
*Diloma subrostrata*  
30 mm



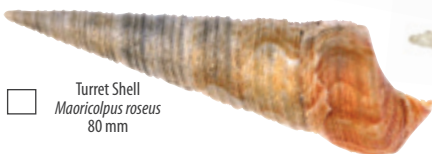
Large Ostrich Foot  
*Struthiolaria papulosa*  
60 mm



Ostrich Foot  
*Pelicaria vermis*  
40 mm



Mudflat Whelk  
*Cominella glandiformis*  
25 mm



Turret Shell  
*Maoricolpus roseus*  
80 mm



Small Turret  
*Stiracolpus symmetricus*  
15 mm



Arabic Volute  
*Alcithoe arabica*  
100 mm

# WORMS



Feecal casts

Lugworm  
*Abarenicola affinis*  
100 mm



Cockle Shell Worm  
*Boccardia* spp.  
20 mm



Bamboo Worm  
Family Maldanidae  
130 mm



Feecal casts

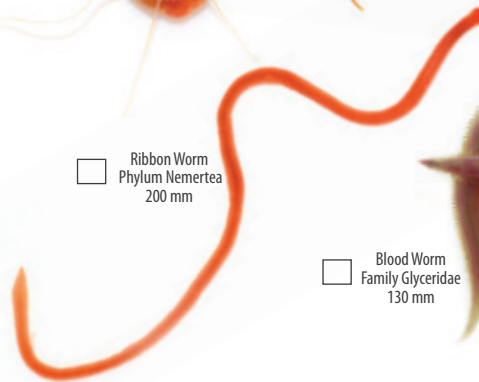
Spaghetti Worm  
Family Terebellidae  
40 mm



Cirratulid Worm  
Family Cirratulidae  
100 mm



Ribbon Worm  
Phylum Nemertea  
200 mm



Blood Worm  
Family Glyceridae  
130 mm



Ragworm  
Family Nereididae  
100 mm



Oweniid Worm  
Family Oweniidae  
45 mm



Opheliid  
*Euzonus otagoensis*  
35 mm



Catworm  
Family Nephtyidae  
100 mm



Polychaete Worm  
Family Orbiniidae  
100 mm



# BARNACLES



Attached to rocks



Estuarine Barnacle  
*Austrominius modestus*  
5 mm

# SEAWEED & DIATOMS

# PLANTS



Gracilaria  
*Gracilaria chilensis*  
500 mm



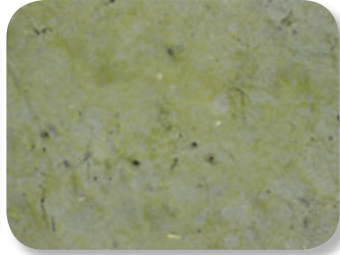
Sea Lettuce  
*Ulva* spp.  
300 mm



Filamentous Red  
*Polysiphonia* spp.  
150 mm



Spume (Diatom matter)



Benthic Diatom  
(green scum)



Eelgrass  
*Zostera muelleri*  
300 mm



Glasswort  
*Sarcocornia quinqueflora*  
150 mm



Shore Spurge  
*Euphorbia glauca*  
500 mm



Marram Grass  
*Ammophila arenaria*  
1200 mm



Pikao  
*Ficinia spiralis*  
900 mm



Tree Lupin  
*Lupinus arboreus*  
1500 mm



Leafless Rush  
*Juncus edgariae*  
2000 mm

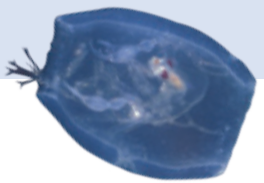


Jointed Wire Rush  
*Apodasmia similis*  
1500 mm



Knobby Clubrush  
*Isolepis nodosa*  
1500 mm

# DRIFT

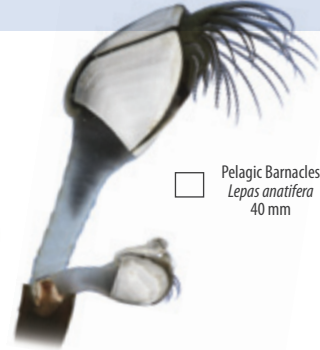


Blue Bottle Jellyfish  
*Physalia physalia*  
150 mm

Barrel Shrimp inside a Salp  
*Phronima* sp.  
40 mm



Kelp Air Bladder  
*Macrocytis pyrifera*



Pelagic Barnacles  
*Lepas anatifera*  
40 mm